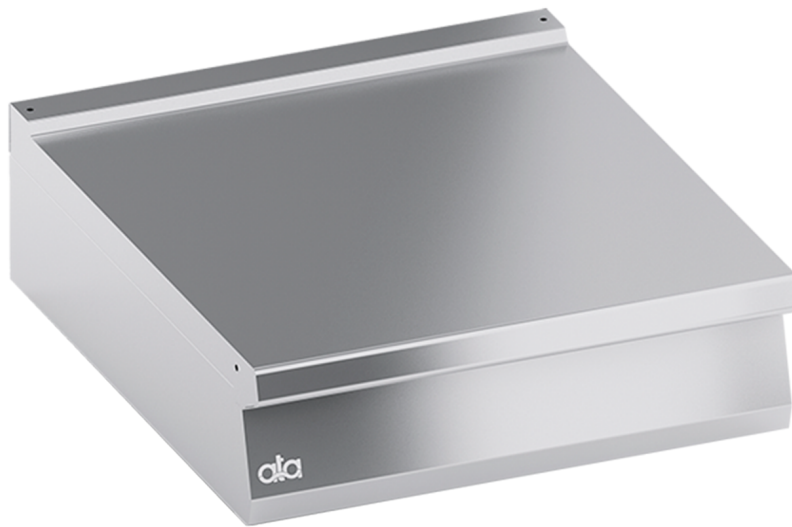


K4NNEP10TT

TOP NEUTRAL ELEMENT 1 MODULE



PRODUCT DESCRIPTION

Reinforced stainless steel frame, suitable for hard work.
AISI 304 2 mm-thick work surface with rounded edges for easy cleaning. Stainless steel AISI 304 front panel.
Laser-cut work top finishing for "head-to-head" matching and binding fastening.

Accessories available **on demand**.



TECHNICAL SPECIFICATIONS

Width: 800 mm
Depth: 900 mm
Height: 250 mm
Weight: 34 kg
Volume: 0.47 m³

