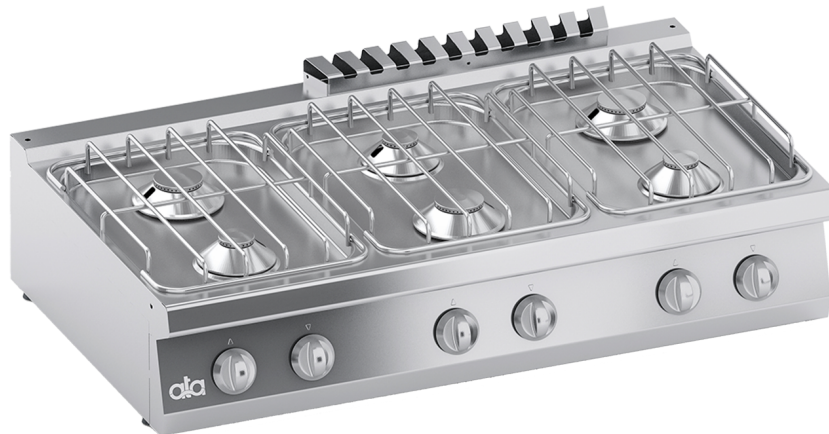


C2GCU15TT

TOP GAS RANGE 6 BURNERS - SOLUTION LINE



PRODUCT DESCRIPTION

Stainless steel frame. Athermic thermoset plastic knobs.

Heating obtained through **single-crown stabilized flame burners** with different power ratings.

Each burner provided with a safety gas cock, which enables the output to be regulated from maximum to minimum. Safety ensured by a thermocouple kept active by the burner flame.

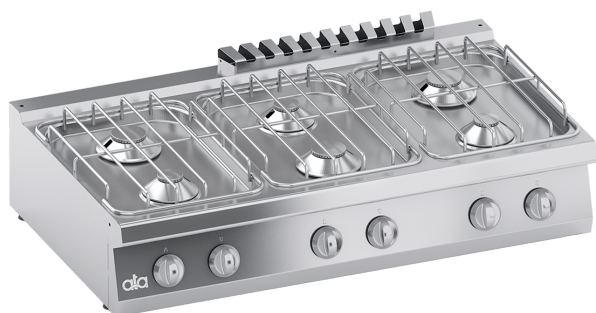
Surface grids made of steel covered by protective material and burners characterized by stainless steel body and burner caps made of nickel-brass.

Surface grids placed on moulded surfaces with rounded edges and water-tight burners for easy cleaning.

Laser-cut work top finishing for "head-to-head" matching and binding fastening.

Tested with natural gas or LPG, according to the user's needs.

Accessories available **on demand**.



TECHNICAL SPECIFICATIONS

Width: 1200 mm
Depth: 700 mm
Height: 255 mm
Weight: 39 kg
Volume: 0.54 m³
Gas power: 30.00 kW

